

Château du Rivau

& ses jardins de conte de fées



2025 BOOKLET

GROUPS

RIVAU CASTLE AND GARDENS

@loic.lagarde

A PRIVATE MEDIEVAL CASTLE

Rivau castle is a private monument in the famous Loire Valley Castle. It has been completely restored over the last 20 years.

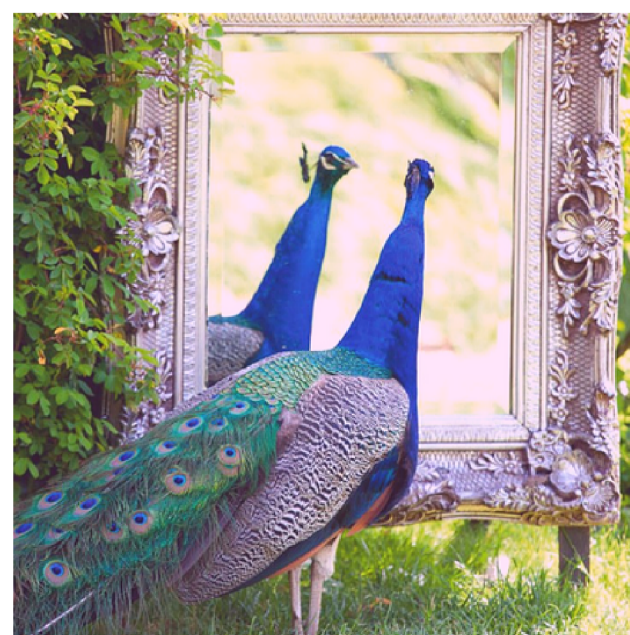
A wonderful journey in the Rivau castle will take you to the heart of rural France. Between Renaissance architecture, natural gardens, contemporary art, it is like living a dream.



@ode.tomytravels

15 FAIRY TALES GARDENS

Gem of the Loire Valley, Rivau Gardens are entitled as 'Remarkable Garden' and part of the 17 most "beautiful gardens of France". Year round, discover our amazing flower collections of bulbs, irises, peonies, roses, lavender, dahlias, ornamental grasses and vegetables. Rivau gardens are also Fragrant Roses Conservatory and Vegetable Conservatory.



OUR PACKAGES FOR A BEAUTIFUL DAY

RATES VALID FOR THE 2025 SEASON
FROM 15 PEOPLE

GUIDED OR SELF-GUIDED TOUR:

Botanical walk, bucolic walk or historical tour, the choice is all yours:

Self-guided tour with leaflet + 10 mn introduction	10 € /pers
Guided Tour in French (1h)	+ 60 € /group
Guided Tour in English (1h)	+ 150 € /group
Audioguide in FR, EN, DE, IT, ES, NL, ZH	+ 2,50 € /2 pers



VISIT AND TASTING :

We produce our own Chinon wine and offer these tasting packages :

Self-guided tour + 2 glasses of wine or soft drinks and charcuterie board	: 22 € /pers
Self-guided tour + 2 glasses of wine or soft drinks or Tea/coffee and homemade cake	: 22 € /pers



VISIT AND LUNCH :

ENJOY OUR CASTLE AND GARDENS, AND STAY FOR LUNCH :

MENU 1 + entry ticket - 32€ /pers : Two large Salad, goat cheese, homemade tart, 1/4 L Rivau wine, water, apple juice, coffee. Optional : Seasonal soup or aperitif or charcuterie (+3.50€ /pers)

MENU 2 + entry ticket - 35€ /pers : Seasonal soup or aperitif, homemade quiche and salad, goat cheese, homemade tart, 1/4 L Rivau Wine, water, apple juice, coffee. Optional : charcuterie (+3.50€ /pers)

MENU 3 + entry ticket - 37,50€ /pers : Seasonal soup or aperitif, Rillons (pork speciality), potatoes and tarragon, goat cheese, homemade tart, 1/4 L Rivau Wine, water, apple juice, coffee. Optional: Charcuterie (+ 3.50€ /pers)
(non-contractual rates, subject to change)



NEW FOR GROUPS UP TO 22 PEOPLE

VISIT AND GOURMET LUNCH IN OUR RESTAURANT: "JARDIN SECRET"

- Menu 1** : Appetizer, Starter, Main Course, Dessert, 1 glass of wine Coffee - **70 €/pers**
- Menu 2** : Menu 1 + Drinks package (Apéritif, 2 glasses of wine): **86 €/pers**
- Menu 3** : Menu 1 + All-inclusive package (Aperitif, Rivau wines, water, digestif): **100 €/pers**
(non-contractual rates, subject to change)



PRACTICAL INFORMATION

ACCESS :

A10 (Exit n°25) - A85 (Exit n°5)
45 mn from Tours, Poitiers or Saumur
2h45 from Paris
15 mn from Chinon
20 mn from Fontevraud
30 mn from Azay le Rideau
45 mn from Langeais or Villandry

CONTACT :

Jérôme André (Groups manager)
02 47 95 77 47 - 06 65 92 42 23
info@chateaurivau.com

SERVICES :

Groups: min 15 people
- Free for Guide and Driver
- Free lunch at La table des fées for Guide **or** driver
- Free Parking
- Seating available in the Gardens
- Wheelchair access in the Gardens

OPENING SCHEDULE :

April : 10am - 6pm
May to September: 10am - 7pm
October to mid November: 10am - 6pm
Rest of the year: on booking



CHÂTEAU DU RIVAU

9 RUE DU CHÂTEAU - 37120 LÉMERÉ

info@chateaurivau.com - www.chateaurivau.com

